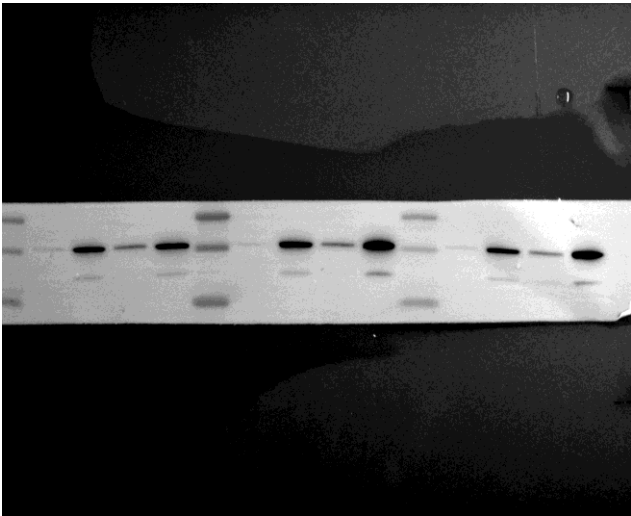
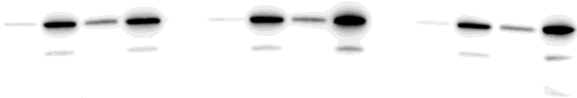


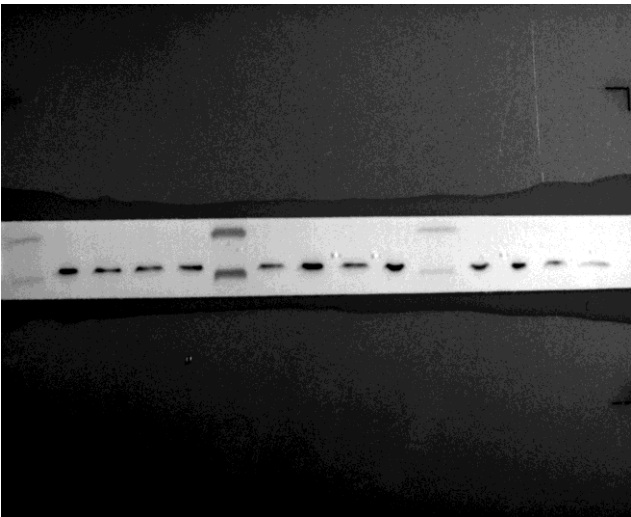
ASC-600MS

ASC 全膜



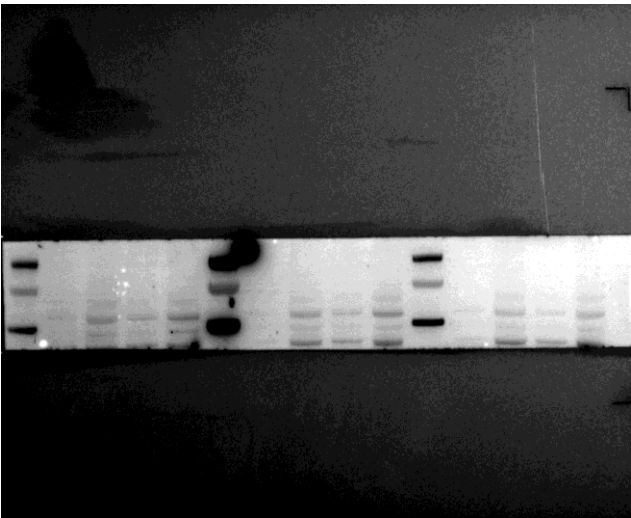
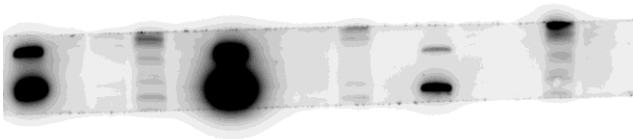
GAPDH-800MS

GAPDH 全膜



parkin-5s

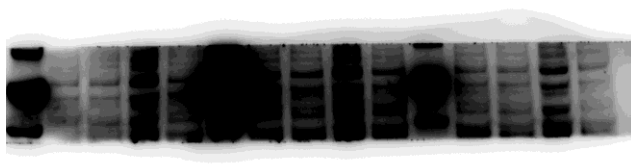
NLRP3 全膜



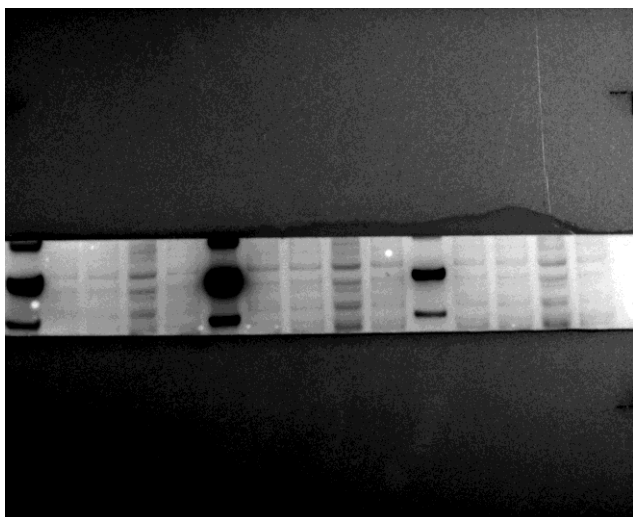
NLRP3-30S



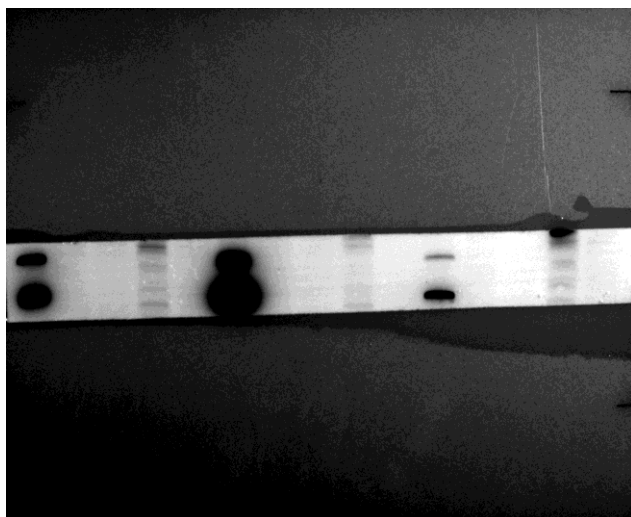
parkin-10s



parkin 全膜.Tif0429

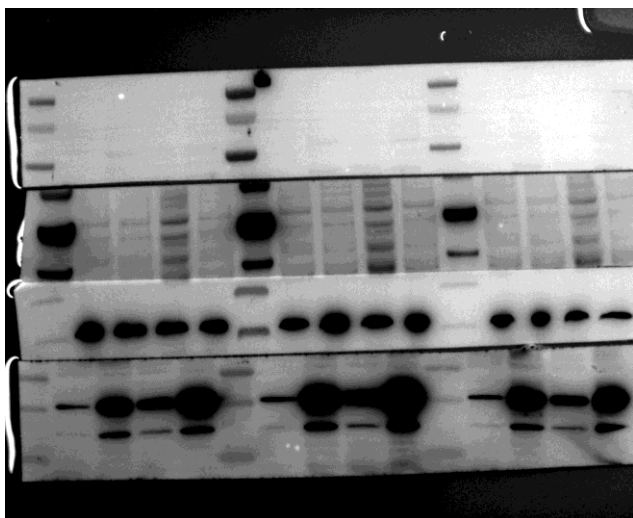


parkin 全膜



全

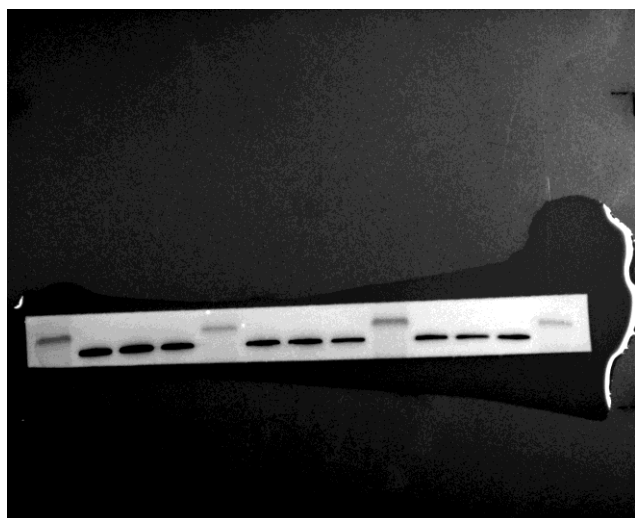
膜



拼

接

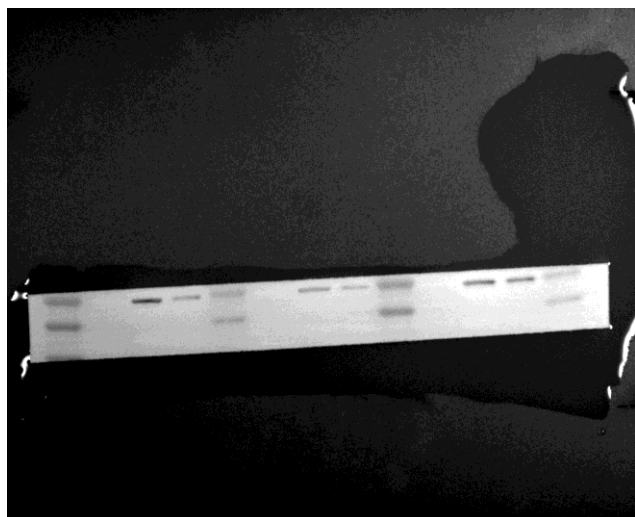
GAPDH 全膜



GAPDH



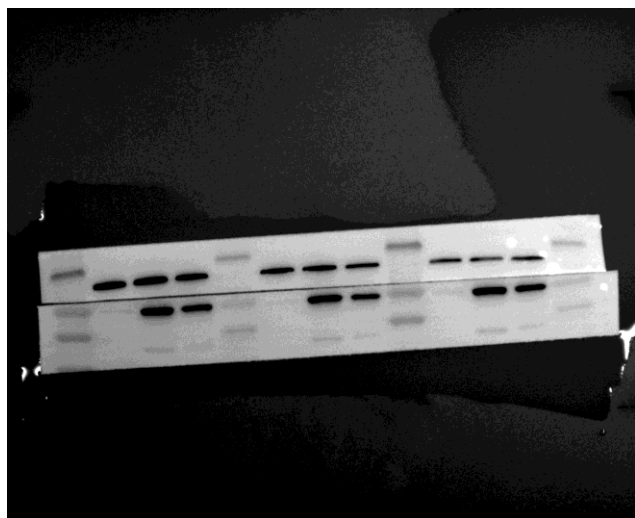
ASC 全膜



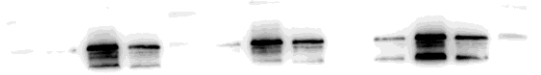
ASC-800ms



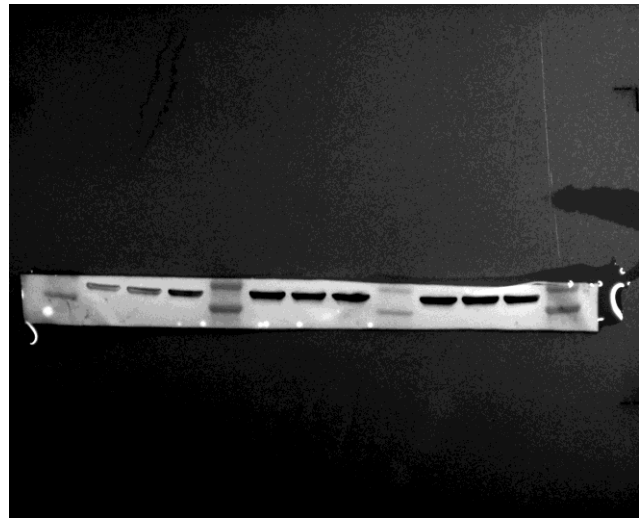
ASC+GAPDH 全膜



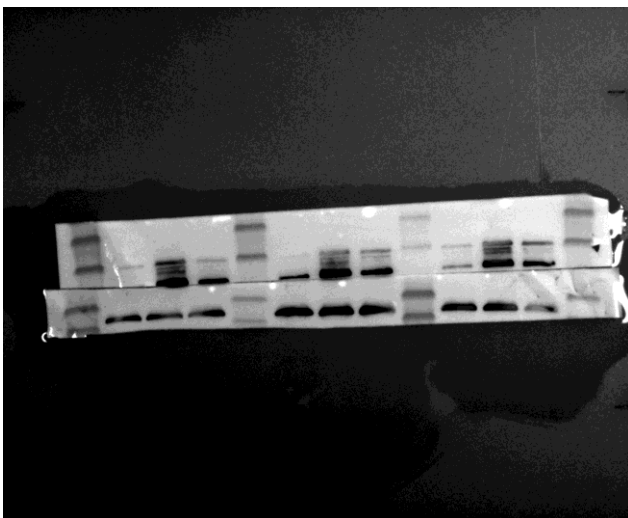
KRT6+300MS



GAPDH 全膜



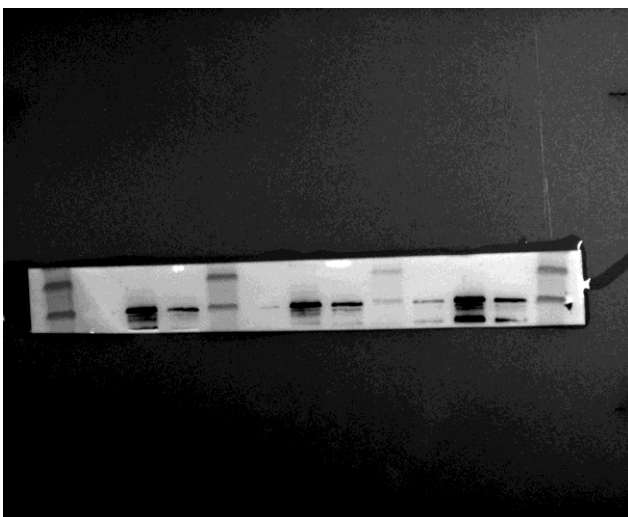
GAPDH+KRT6 全膜



GAPDH+100ms



KRT6 全膜



KRT1 全膜 2



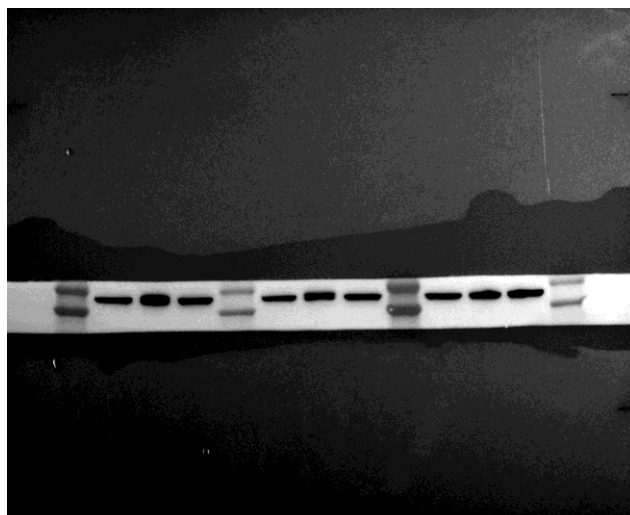
KRT1 全膜



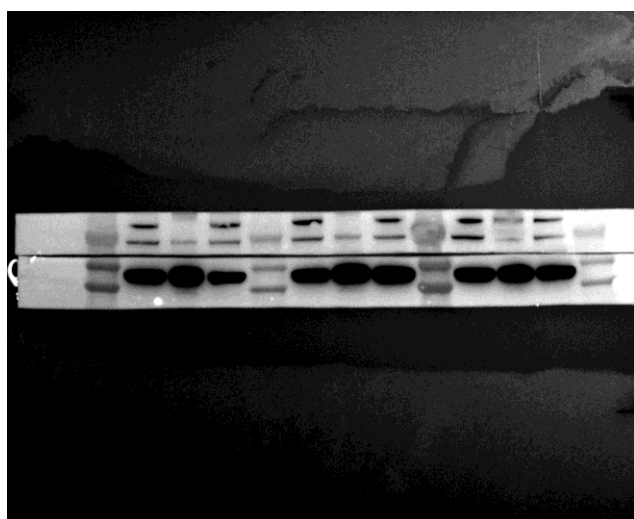
KRT1-300ms



GAPDH 全膜



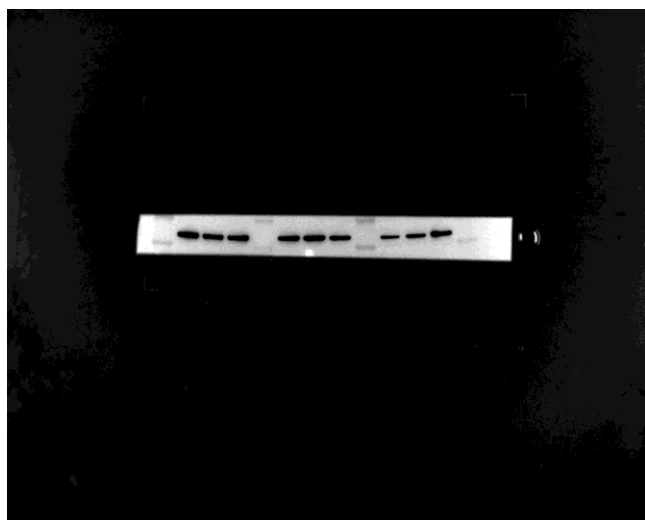
GAPDH+KRT1



GAPDH



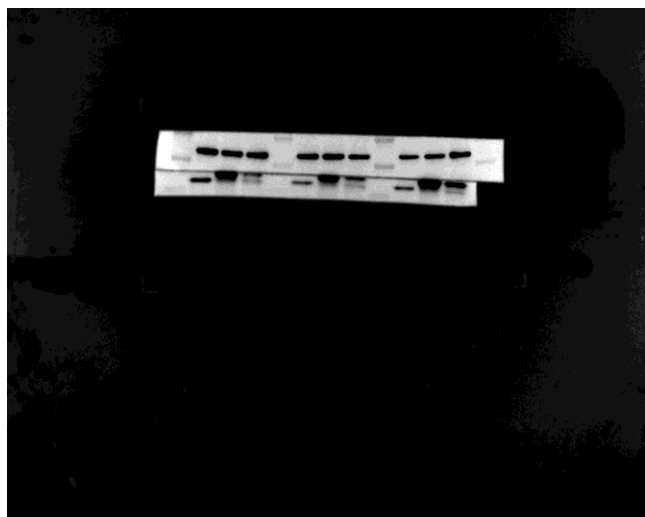
GAPDHquanmo



GAPDH-200ms



gapdh+ASCquanmo



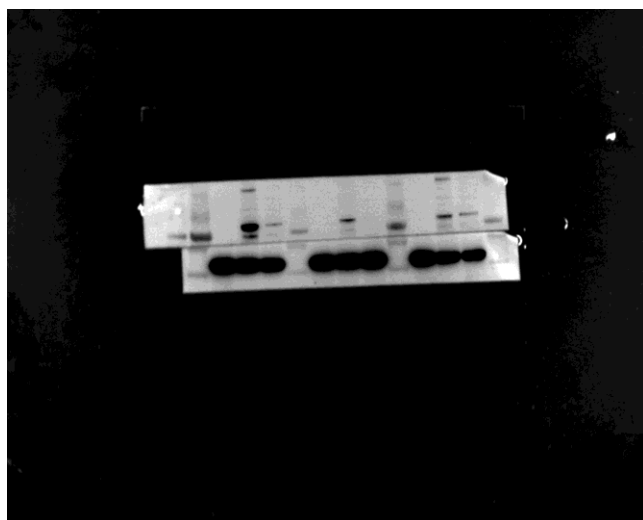
ascQUANMO



ASC-900ms 人的 3 组



全膜 NLRP3+GAPDH



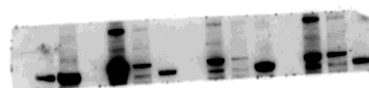
全膜 NLRP3



全膜 GAPDH



NLRP3+500ms



GAPDH+100MS



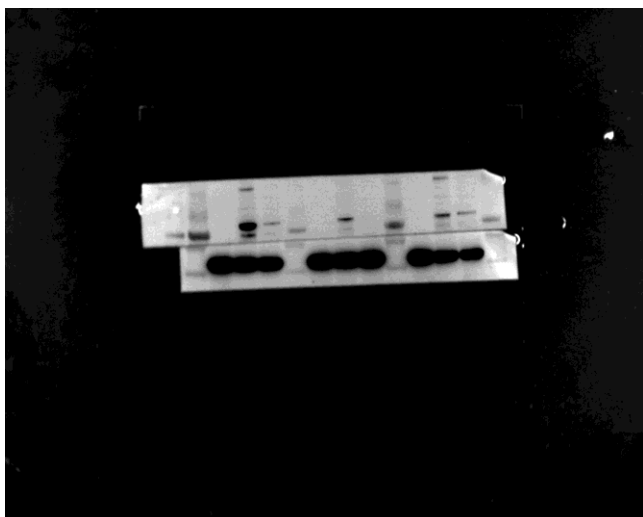
人 ASC-900ms 全膜



人 ASC-900ms



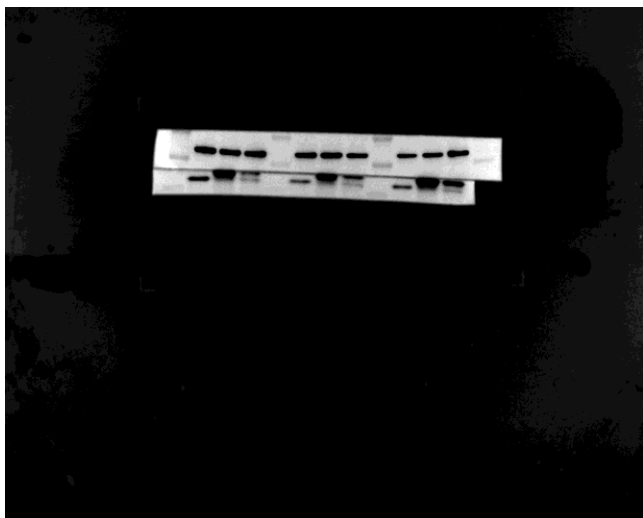
全膜人 NLRP3+GAPDH



GAPDH-200ms

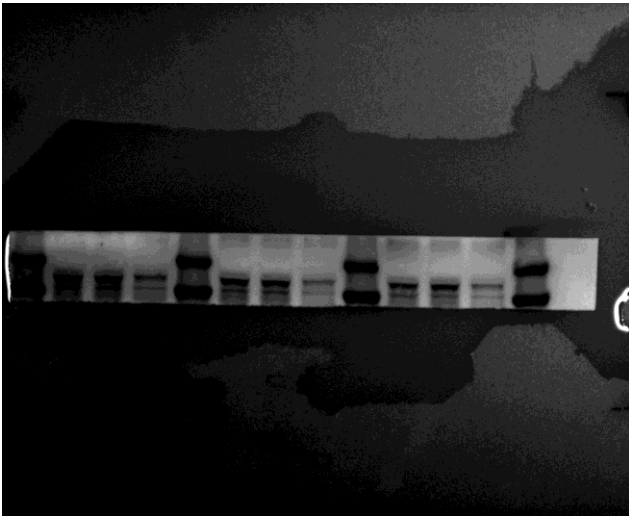


gapdh+人 ASCquanmo

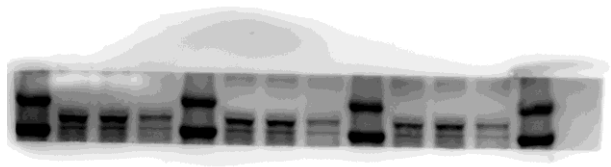




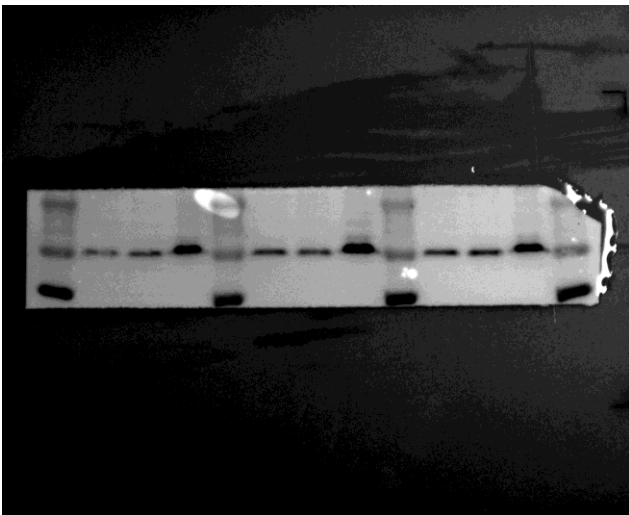
P62 全膜



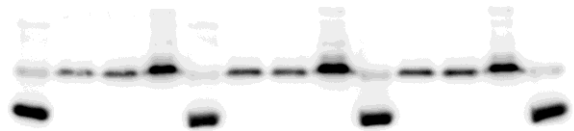
P62-3S



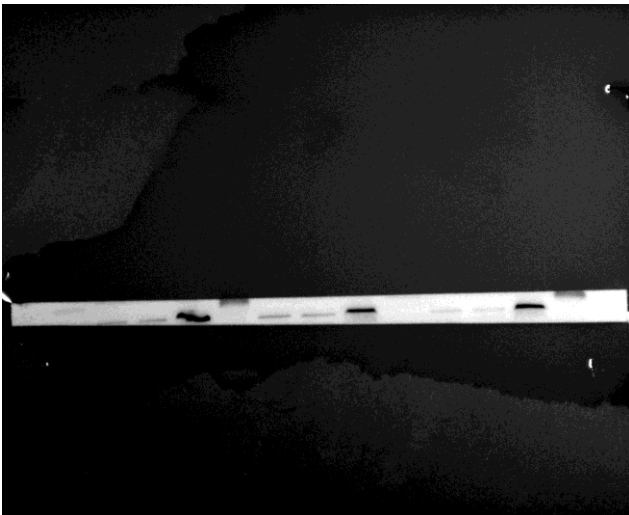
LC3B 全膜



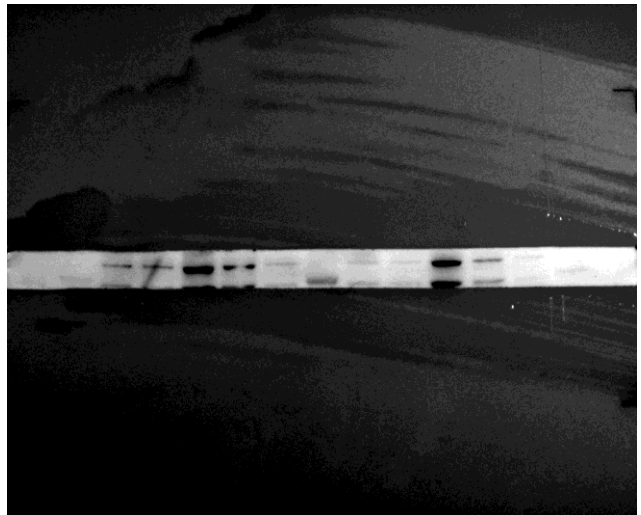
LC3B-1S



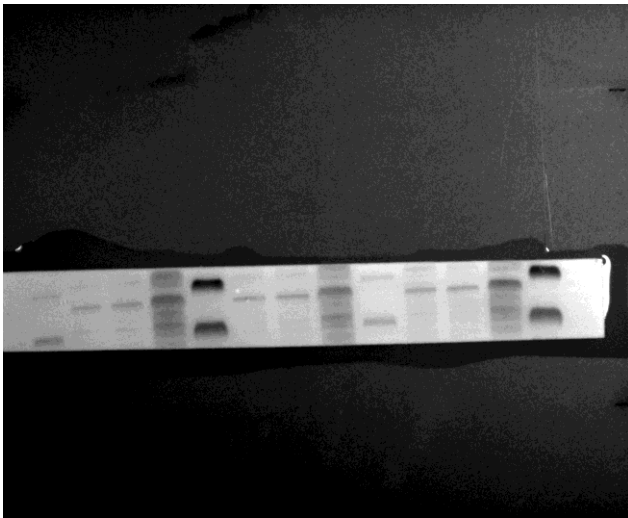
PINK1 全膜



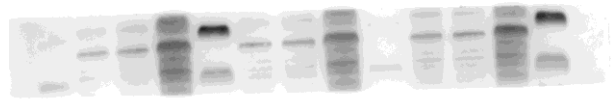
PINK1 rescuex20418



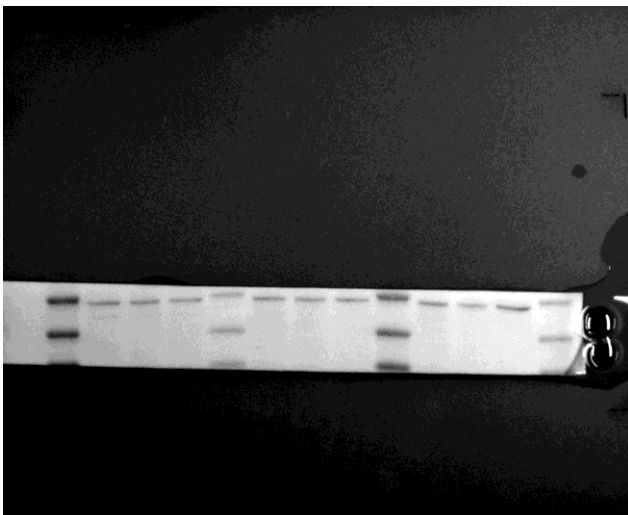
parkin 全膜



parkin-400ms



GAPDH 全膜 2



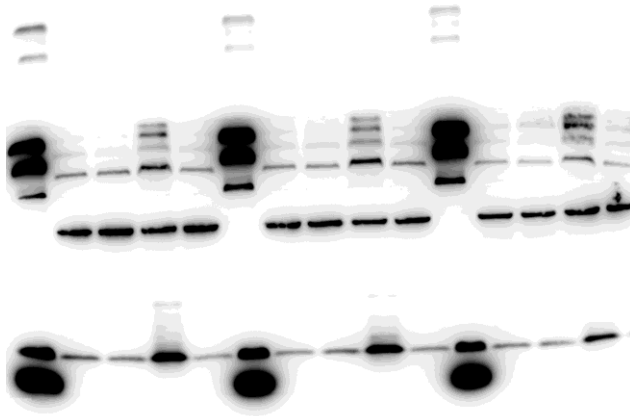
gapdh 全膜.Tif2



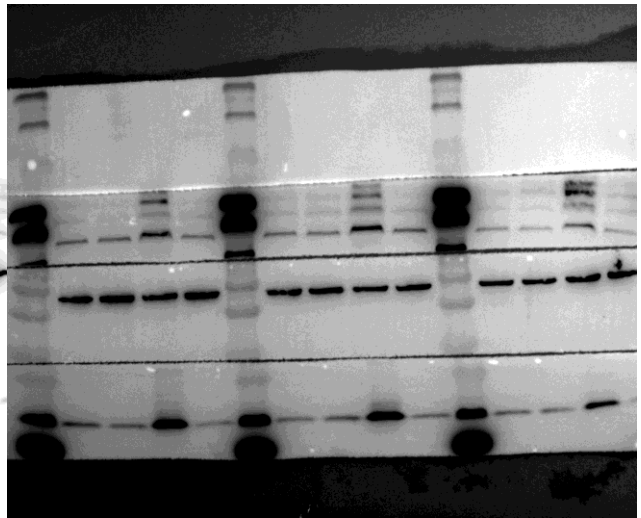
GAPDH %



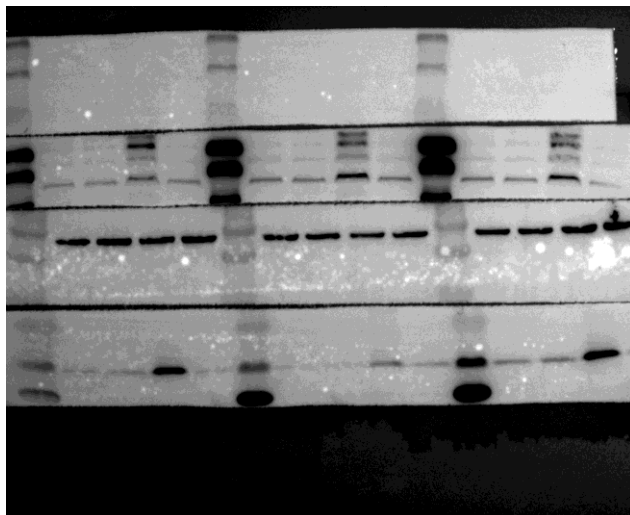
全膜-p62



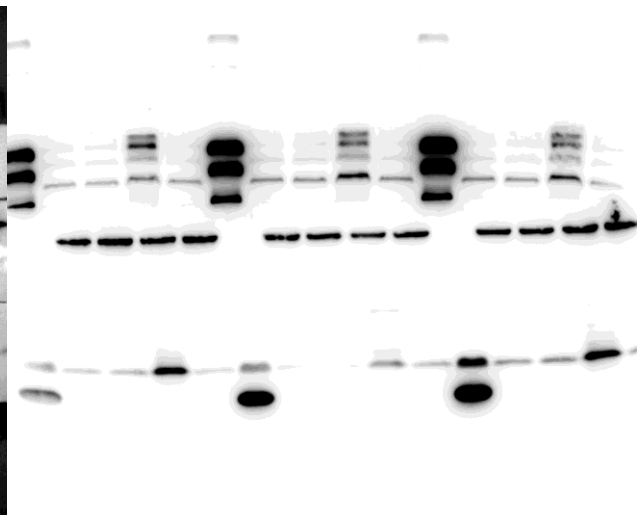
全膜 1-r-p62



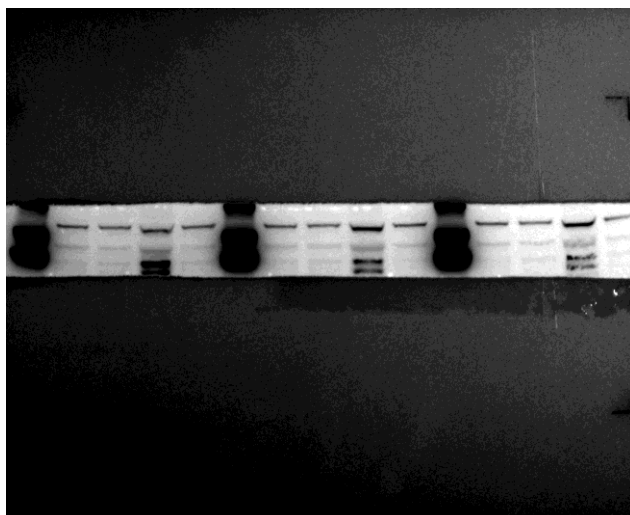
全膜 1-beclin1-r



全膜 1-beclin1



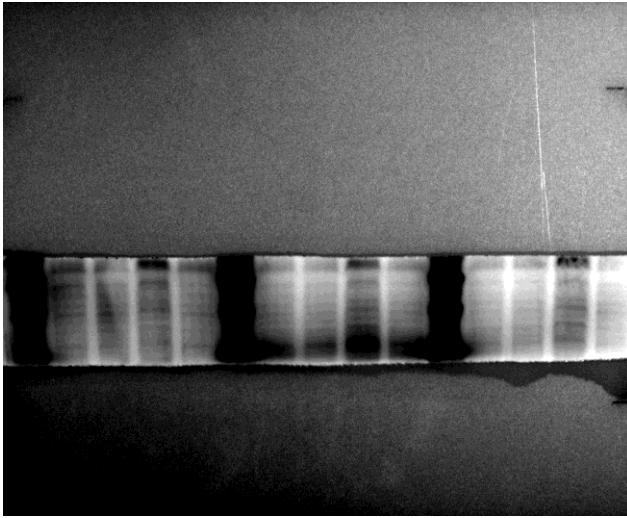
PINK1-2s-r



PINK1-2s



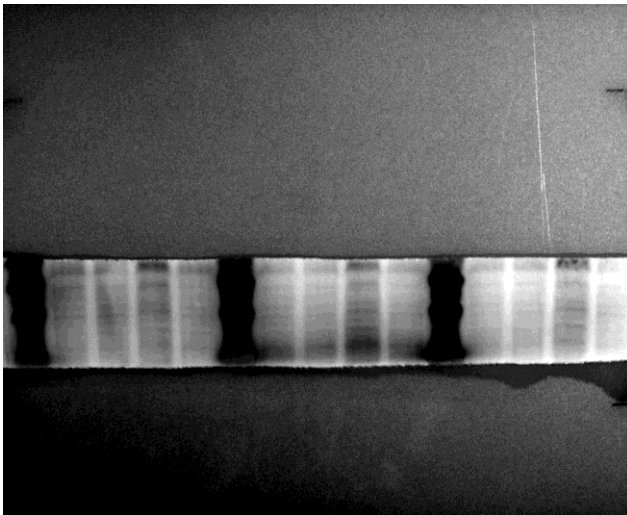
PARKIN-3S-R



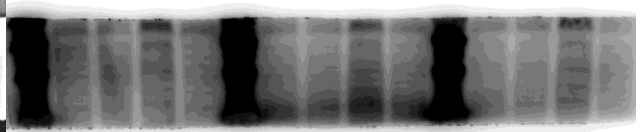
PARKIN-3S



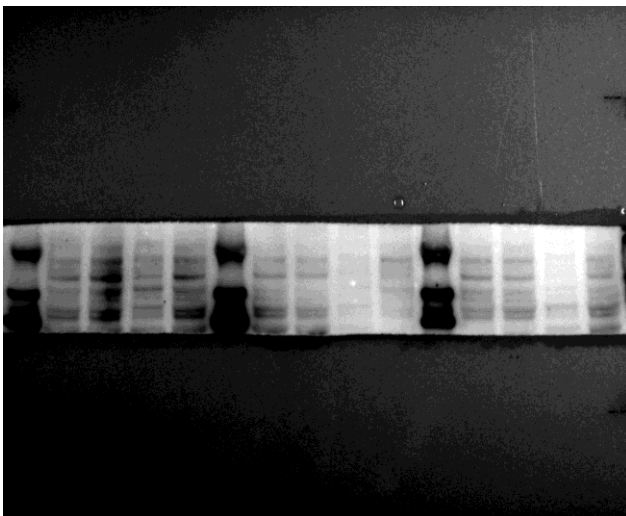
PARKIN-2.5S-R



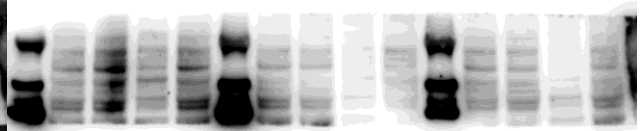
PARKIN-2.5S



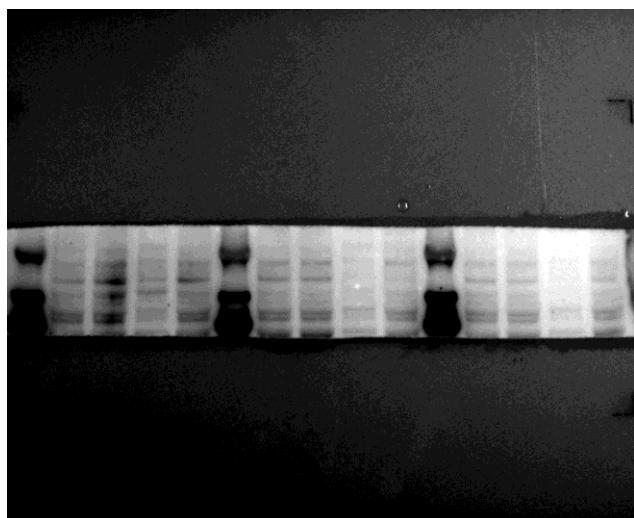
p62-40s-r



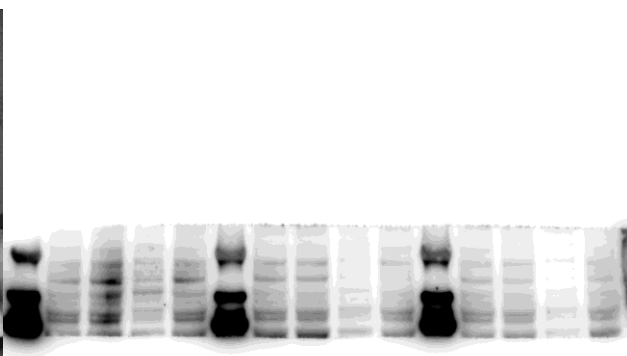
p62-40s



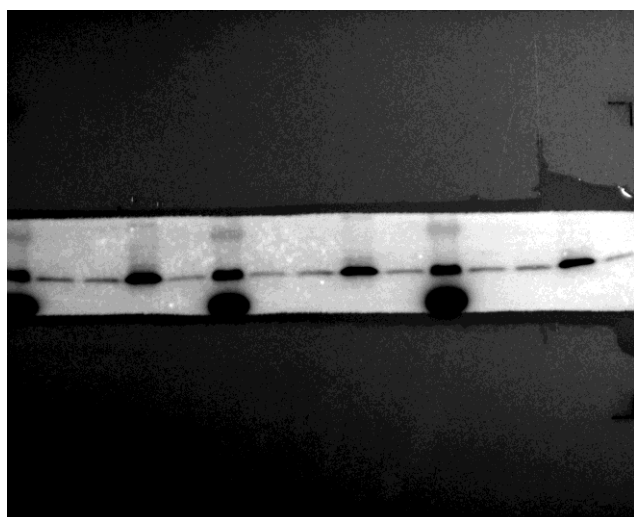
p62-30s-r



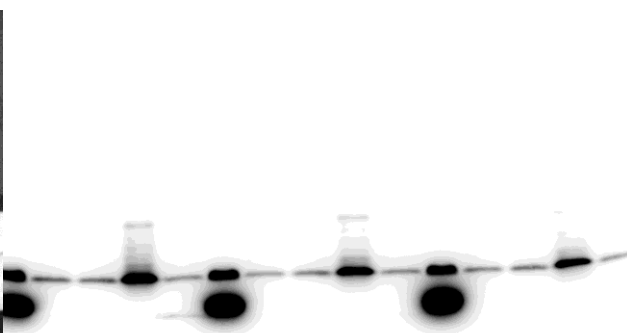
p62-30s



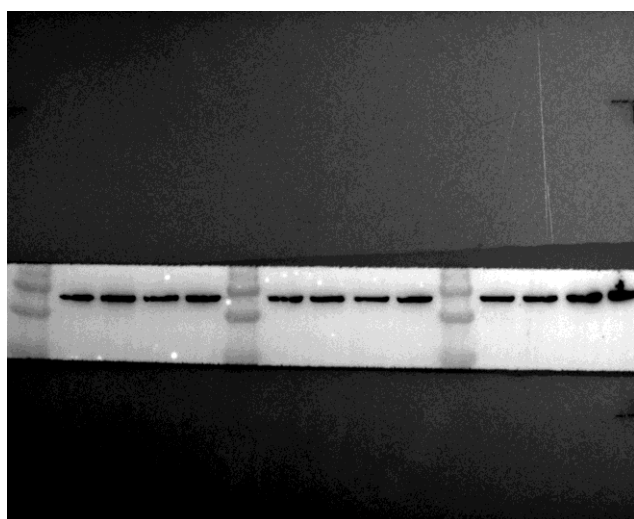
lc3-1s-r



lc3-1s



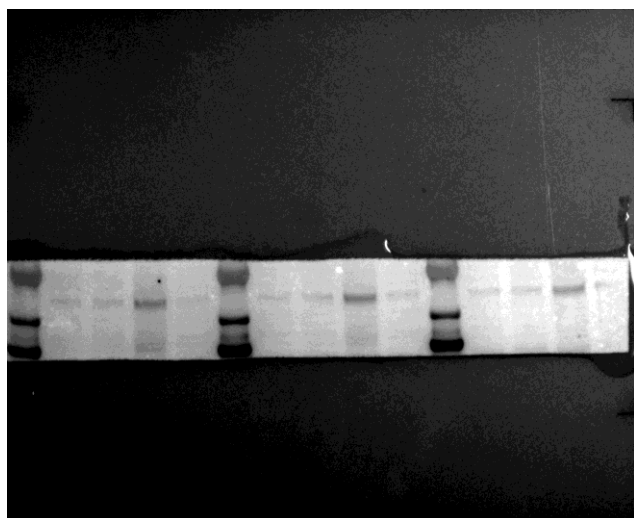
GAPDH-1S-R



GAPDH-1S



beclin1-5s-r



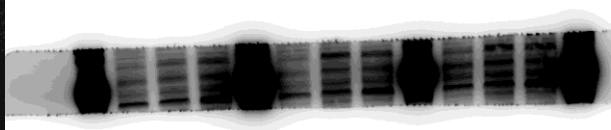
beclin1-5s



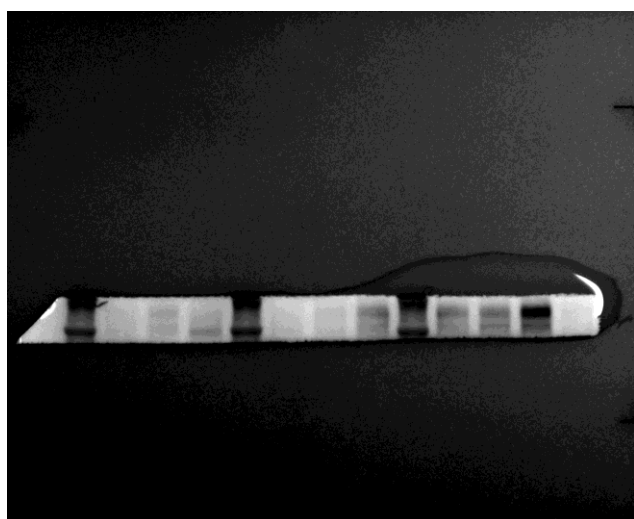
全膜 GAPDH



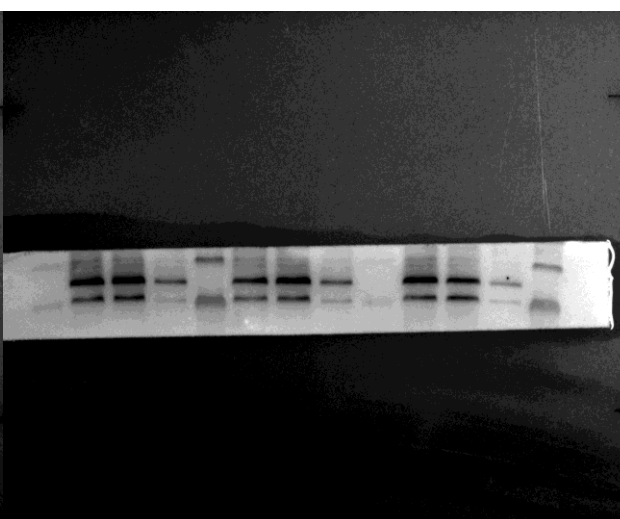
pink1-2s 全膜.tif



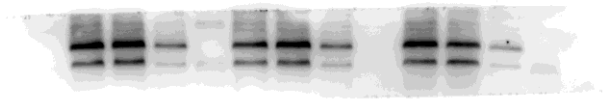
parkin-3s 全膜



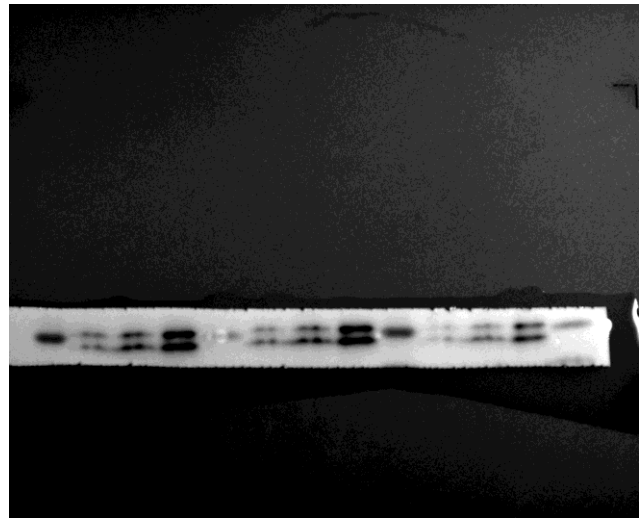
P62 全膜



P62+30s



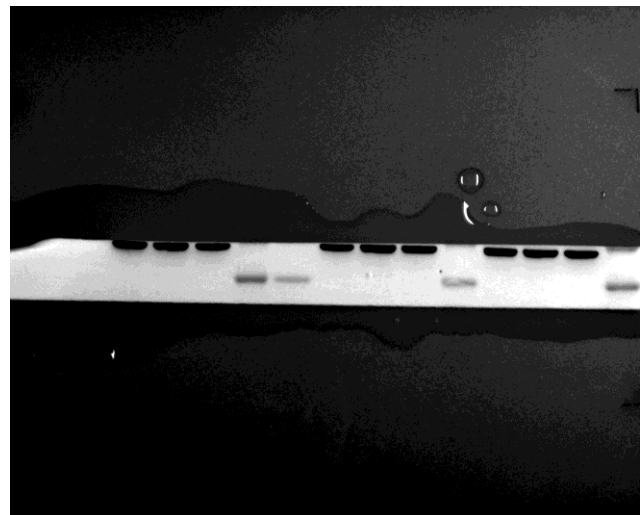
LC3B 全膜 2



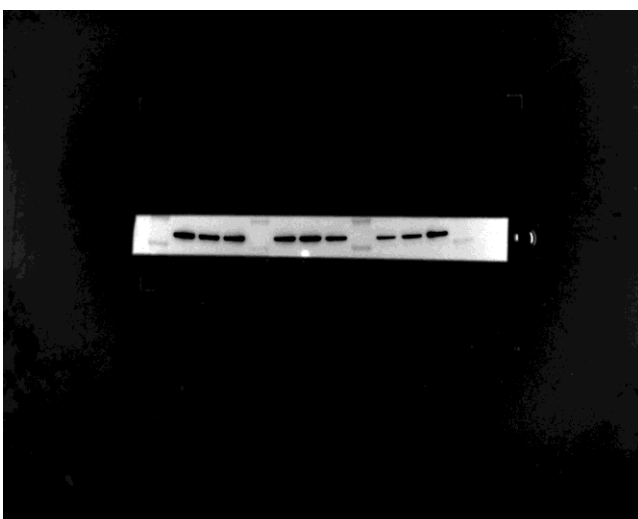
LC3B 2s



GAPDH 全膜



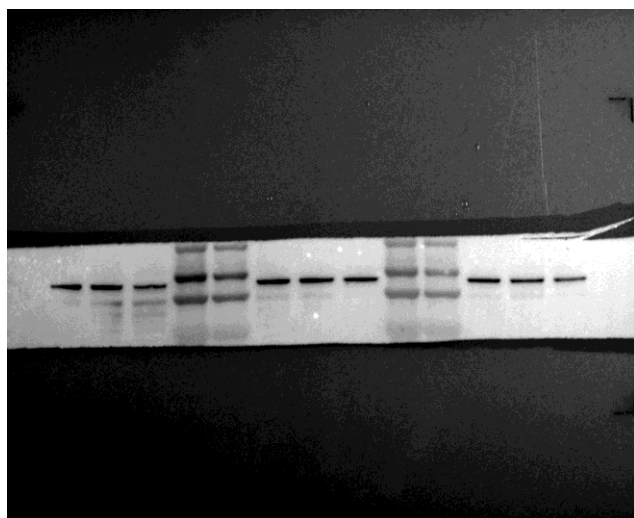
GAPDHquanmo



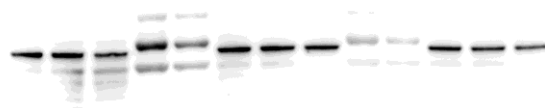
GAPDH-800ms



gapdh-1-2s-r. 配 beclin-1



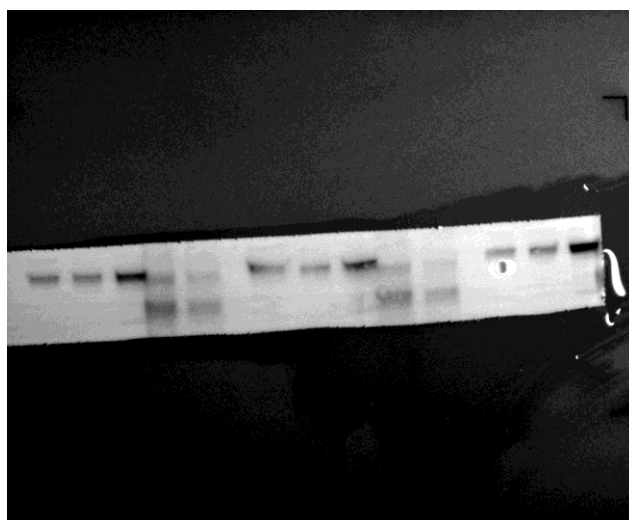
gapdh-1-2s. 配 beclin-1



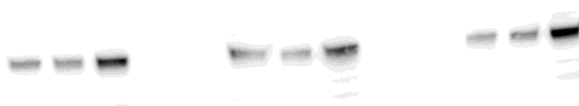
GAPDH+100MS



BECLIN1 全膜 24.10.06.x3



Beclin-1-2s 人 x

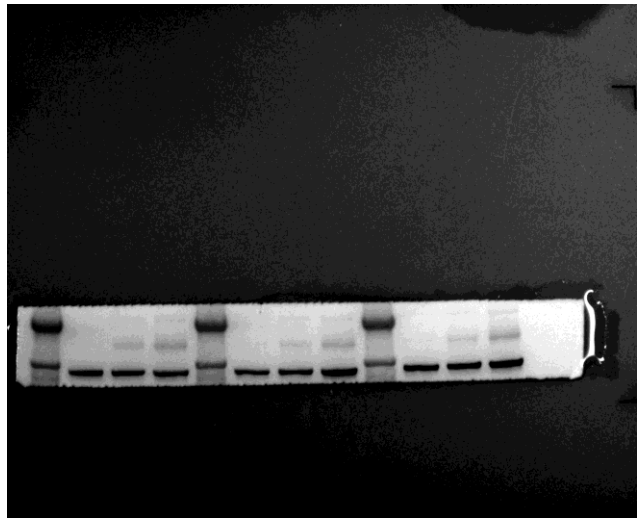




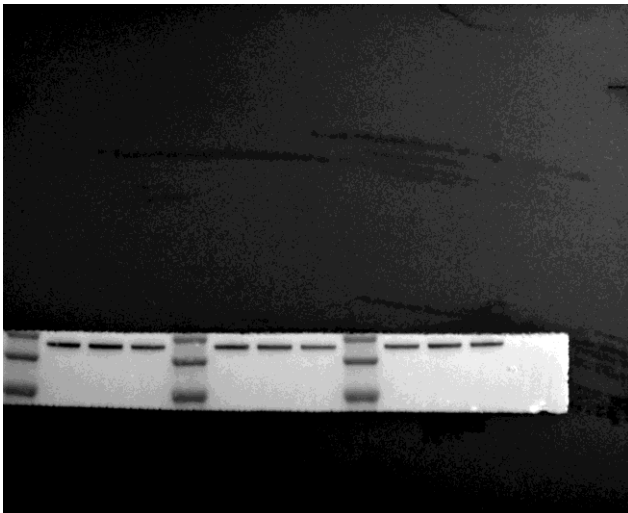
ACTIN



ACTINQUANMO



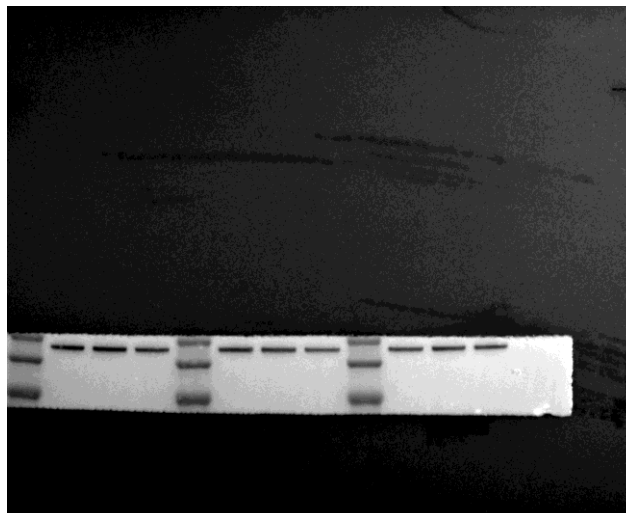
GAPDH80S



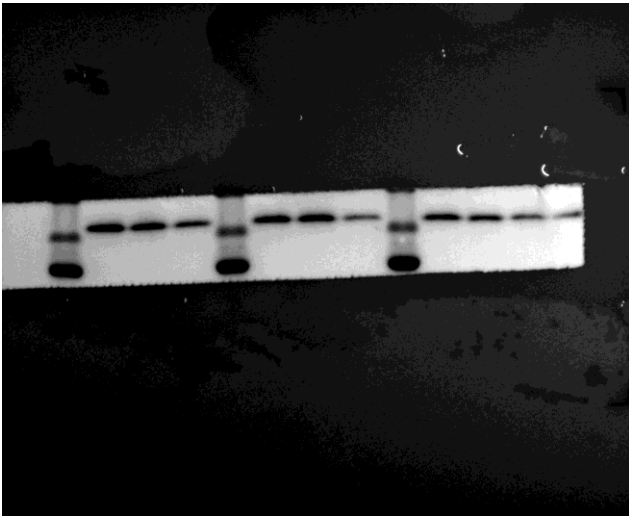
GAPDH1228



GAPDH80S



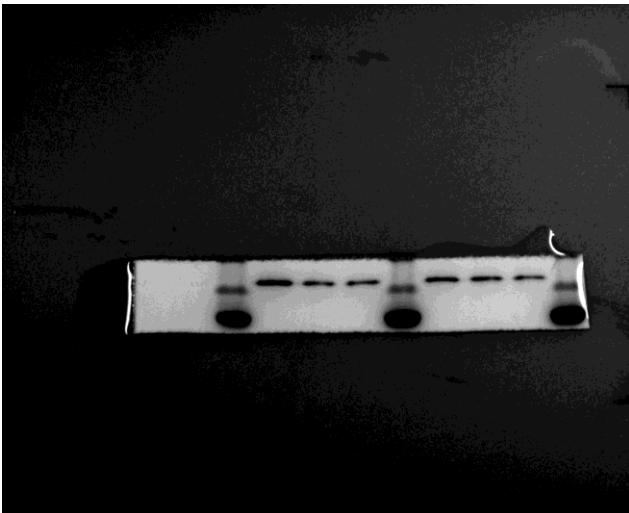
tom20-2



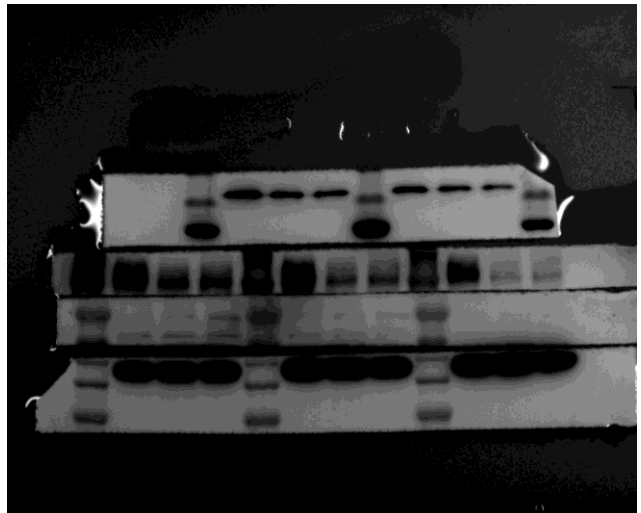
tomo20



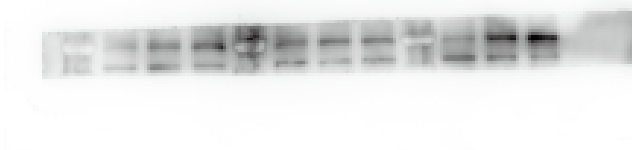
tomo20QUANMO



全膜合成



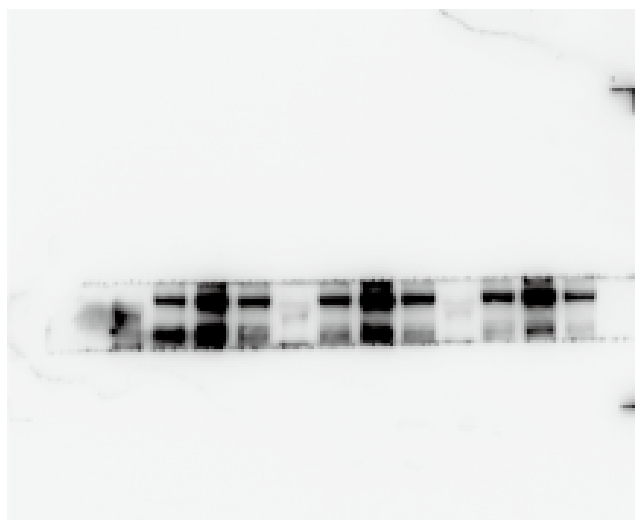
LC3B



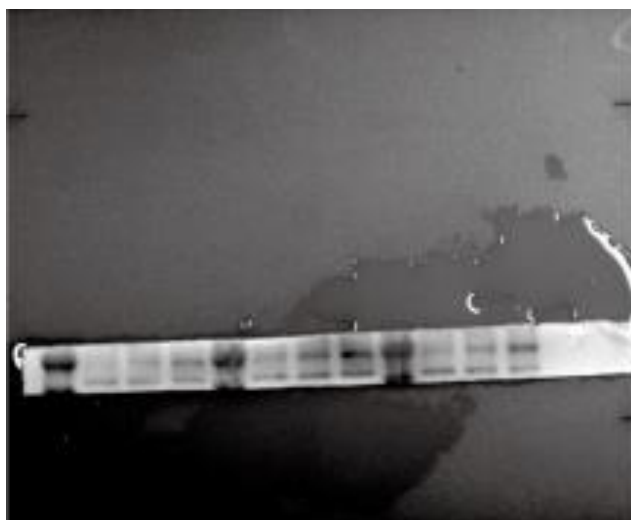
P62 30S.Ti 小鼠 x3 用



P62 60s



parkin



PINK1-1.小鼠 x1



小鼠 parkinX3

